



GUNTUR ENGINEERING COLLEGE

Approved by AICTE & Affiliated to JNTU - Kakinada

NH - 5, YANAMADALA, GUNTUR - 522 019

Website : www.gecg.in

Feedback Analysis

During A.Y.:

2022-23


PRINCIPAL
GUNTUR ENGINEERING COLLEGE
YANAMADALA-522 019
GUNTUR (Dt.), A.P.



GUNTUR ENGINEERING COLLEGE

(Approved by AICTE, Affiliated to JNTU Kakinada)

NH-5, Yanamadala, Guntur-522019

www.gecg.in

EMPLOYER FEEDBACK ON CURRICULUM ACADEMIC YEAR 2022-23

1. OBJECTIVE OF FEEDBACK


The college is affiliated to JNTU-Kakinada. The syllabus finalized by JNTU is implemented in the affiliated colleges. The College Academic Committee identifies the curricular gaps and plans for co-curricular/extracurricular activities in college. The college obtains feedback from all the stakeholders like students, alumni, employer and teachers on curriculum/syllabus to enrich the quality of activities performed in college for improvement of the professional skills, employability and entrepreneurial skills of the students.

2. SUMMARY OF FEEDBACK OBTAINED

S.NO	STAKEHOLDERS	NO. OF SAMPLE FEEDBACKS ANALYSED
1	Students	22
2	Faculty	16
3	Employers	05
4	Alumni	12

3. The feedback on curriculum was taken from the students of all years, faculty, Alumni, and Employers at the end of each academic year.


PRINCIPAL
GUNTUR ENGINEERING COLLEGE
YANAMADALA-522 019
GUNTUR (Dt.), A.P.


Principal
PRINCIPAL
GUNTUR ENGINEERING COLLEGE
YANAMADALA-522 019
GUNTUR (Dt.), A.P.



GUNTUR ENGINEERING COLLEGE

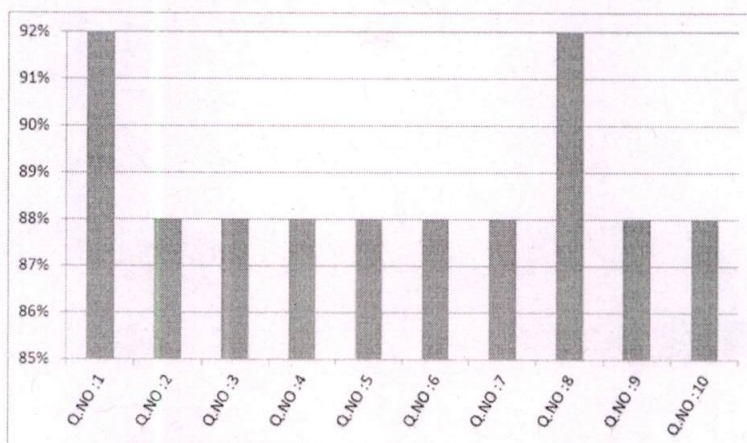
(Approved by AICTE, Affiliated to JNTU Kakinada)

NH-5, Yanamadala, Guntur-522019

www.gecg.in

EMPLOYER FEEDBACK AND ANALYSIS ON CURRICULUM DESIGN 2022-23

S.No	QUESTIONNAIRE	FEEDBACK
1	How well do you think skills and Knowledge of the students align with the current Industry requirements?	92%
2	To prepare the students to be better workforce, do you believe any improvements need in any specific areas in the curriculum?	88%
3	Do you think the curriculum is covering the latest technologies and industry trends?	88%
4	Do you find any subjects in the curriculum are exceptionally beneficial to our students?	88%
5	Are there any gaps should be addressed in the curriculum that you believe to enhance employability options?	88%
6	Does our students analyze well on critical thinking and on problem sloving skills, as they were trained?	88%
7	Does the curriculum is effectively integrating with the practical exposure, hands-on experience and real world applications of the concepts they learned?	88%
8	Do you think along with the curriculum should we focus on aspects like soft skills training and leadership qualities in the students?	92%
9	How is the overall adaptability and flexibility in the curriculum by focusing on the changing industry needs	88%
10	Does our curriculum adequately preparing the students to develop their decision making abilities and ethics to be followed at workplaces?	88%



[Signature]

PRINCIPAL

GUNTUR ENGINEERING COLLEGE

YANAMADALA-522 019

GUNTUR (Dt.), A.P.

[Signature]

Principal
PRINCIPAL

GUNTUR ENGINEERING COLLEGE

YANAMADALA-522 019

GUNTUR (Dt.) A.P.